



Seed Collection Booklet 2025





Community Seed Collector Terms & Conditions

- 1.** All seeds collected must be free of mould, twigs, leaves, or pods. Pickers will be required to clean the seeds thoroughly if it contains any debris.
- 2.** Please do not remove all the seeds or fruit from the trees.
- 3.** Do not cut down trees to access fruit or seeds.
- 4.** Avoid taking any risks that may cause injury.
- 5.** Always prioritise safety while working.
- 6.** Ensure you have permission from the designated land manager or custodian before collecting seeds.
- 7.** Stay hydrated - drink plenty of water, wear protective gear such as long sleeves, wide brim hats, appropriate footwear, sunscreen and take periodic breaks to prevent heat exhaustion.

Thank you for becoming a valued participant of the Metro Mining seed picking community!



Community seed collection days are:

Mapoon - Mondays
Napranum - Tuesdays

Are you interested in being a part of this meaningful journey? We're looking for passionate seed pickers to join us in making a difference!

Email -

community@metromining.com.au

for more information or visit

www.metromining.com.au

Seed Collection Timetable 2025

March - Monday 17th & Tuesday 18th

April - Monday 14th & Tuesday 15th

May - Monday 12th & Tuesday 13th

June - Monday 09th & Tuesday 10th

July - Monday 07th & Tuesday 08th

August - Monday 04th & Tuesday 05th

September - Monday 01st & Tuesday 02nd

September - Monday 29th & Tuesday 30th

October - Monday 27th & Tuesday 28th

November - Monday 24th & Tuesday 25th

December - Monday 15th & Tuesday 16th

Address: Bauxite Hills Mine, Skardon River QLD

Website: www.metromining.com.au

Email: community@metromining.com.au

Species Identification Sheet:

Cockatoo Grass

Alloteropsis Semialata

Description: Perennial grass to 1 – 1.5m high; Seed heads generally of 3 or more seed heads. One of the first grasses to emerge after rain. 3 bags per person.

Location: Common grass in woodland and open forest.

When to pick: Pick when seeds have turned brown on the seed head. If the grass is flowering (see photo below), come back in 10-14 days and the seeds will be ready to pick. Remove seeds by hand stripping. The seeds should come off easily. If seeds are hard to remove then the seed head is immature and not ready.

Note: Seeding only lasts 1 month and seed will become hard to source by mid - January



Address: Bauxite Hills Mine, Skardon River QLD

Website: www.metromining.com.au

Email: community@metromining.com.au

Species Identification Sheet:

Giant Spear Grass

Heteropogon Triticeus

Description: Perennial grass to 3m high; stems often covered in a white powdery substance. Distinctive seed heads with 6/7 grass seeds within (larger than black spear grass). **3 bags per person.**

Location: Common grass in woodland and open forest.

When to pick: Collect the entire seed head. The seed head is mature when the seeds begin to bend and are of a black colour

Seeding time: February– May



Address: Bauxite Hills Mine, Old Mapoon, Skardon River QLD

Website: www.metromining.com.au

Email: community@metromining.com.au

Species Identification Sheet:

Northern Cane Grass

Mnesithea Rottboellioides

Description: Perennial grass to 2m high. Leaves have a distinctive white vein. Produces numerous seed heads that are pale brown colour when mature. **3 bags per person.**

Location: Common grass in seasonally inundated areas.

When to pick: Collect the entire seed head. The seed head is mature when the stems have turned a brown colour and there are no green parts remaining. Ensure the seed head contains seeds.

Seeding time: January - February



Address: Bauxite Hills Mine, Skardon River QLD

Website: www.metromining.com.au

Email: community@metromining.com.au

Species Identification Sheet:

Sorghum

Sarga Plumosum

Description: Perennial grass to 1 - 3m high; Distinctive seed heads that are large and a red-brown colour.**3 bags per person.**

Location: Common grass in woodland and open forest.

When to pick: Collect the entire seed head. The seed head is mature when the seeds begin to turn a dark brown colour and clump around stem. Handling seed heads can create an itch if proper PPE is not worn.

Seeding time: March - April



Address: Bauxite Hills Mine, Skardon River QLD

Website: www.metromining.com.au

Email: community@metromining.com.au

Species Identification Sheet:

Beach Wattle

Acacia Crassicarpa

Description: Tree to 8m; Produces flat seed pods containing numerous seeds that have a "white tail".

Location: Common in seasonally wet areas and along the foredunes of estuaries and beaches.

When to pick: Collect pods once they have turned brown and are beginning to split open. Ensure seeds are black and hard. If seeds are soft, they should be discarded.

Seeding time: September - November



Address: Bauxite Hills Mine, Skardon River QLD

Website: www.metromining.com.au

Email: community@metromining.com.au

Species Identification Sheet:

Ironbark Wattle

Acacia Leptocarpa

Description: Tree to 5m; Produces slender elongated seed pods that contain seeds connected by a “yellow tail”.

Location: Common throughout area, especially in disturbed areas.

When to pick: Remove the seeds when they are exposed from the pod. Place seeds in a bag.

Seeding time: September - November



Address: Bauxite Hills Mine, Skardon River QLD

Website: www.metromining.com.au

Email: community@metromining.com.au

Species Identification Sheet:

Roth's Wattle

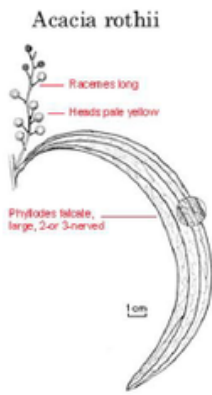
Acacia Rothii

Description: Tree to 10m; Produces long seed pods containing up to ten seeds.

Location: Common throughout the area.

When to pick: Collect pods once they have turned brown and are beginning to split open. Ensure seeds are black and hard. If seeds are soft they should be discarded. **Only 1 small bag per collector unless otherwise approved**

Seeding time: August - November



Illustrated by M. Pieroni

Address: Bauxite Hills Mine, Skardon River QLD

Website: www.metromining.com.au

Email: community@metromining.com.au

Species Identification Sheet:

Soap Tree

Alphitonia Excelsa

Description: Tree to 12m, leaves are distinctively white underneath. Produces small black fruits that contain two red seeds.

Location: Common throughout the area.

When to pick: Collect fruits when the seeds are exposed. If seed are not exposed leave fruits in the sun until the husk has cracked open.

Seeding time: September - November



Address: Bauxite Hills Mine, Skardon River QLD

Website: www.metromining.com.au

Email: community@metromining.com.au

Species Identification Sheets:

Liniment Tree

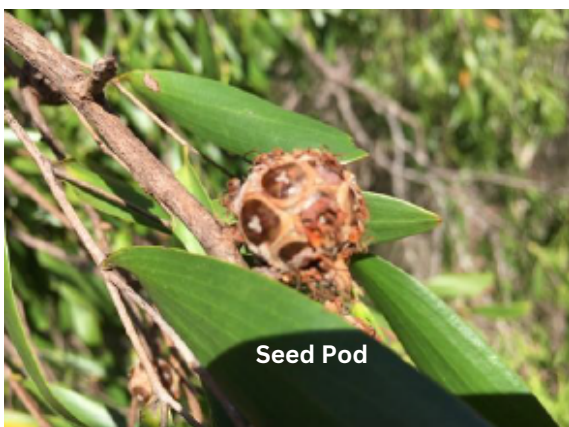
Asteromyrtus Symphyocarpa

Description: Tree to 10m, produces round seed pods that resemble small asteroids/soccer balls.

Location: Commonly found in seasonally inundated areas and swamps.

When to pick: Collect seed capsule when brown. Place capsules into an open container and leave to dry for up to a week. Seeds will fall out of the capsules and settle on the bottom of the container. Remove empty capsules and place into bags.

Seeding time: May - August



Address: Bauxite Hills Mine, Skardon River QLD

Website: www.metromining.com.au

Email: community@metromining.com.au

Species Identification Sheet:

Banksia

Banksia Dentata

Description: Tree to 8m, produces large, elongated seed pods that contain two paper thin seeds.

Location: Commonly found in wet areas.

When to pick: Remove the largeseed pods when they have lost all flowering parts and pods are closed. Place the pods in a hot area that is not exposed to the wind.

The seed pods will open. Each pod contains two paper thin seeds that are divided by a woody seed separator. Remove the seeds from the separator and place into a bag. Seed separators will not be accepted

Seeding time: Mature pods can be collected from October - December



Address: Bauxite Hills Mine, Skardon River QLD

Website: www.metromining.com.au

Email: community@metromining.com.au

Species Identification Sheet:

Mango Bark

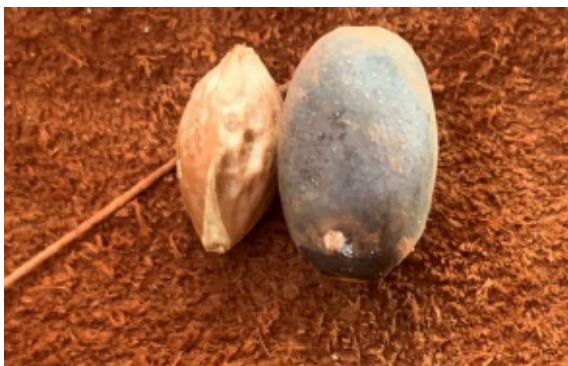
Canarium Australianum

Description: Tree to 25m; Produces fleshy purple fruit that often attract cockatoos. The sap is used as a glue to make spears

Location: Common in most areas

When to pick: Pick the fruit when they are purple and have fallen from the tree. Soak the fruits in water and remove the flesh from the seed. Place seeds in a dry area.

Seeding time: August - December



Address: Bauxite Hills Mine, Skardon River QLD

Website: www.metromining.com.au

Email: community@metromining.com.au

Species Identification Sheet:

Yellow Dye Tree

Coelospermum Reticulatum

Description: Tree to 3m; Often has a corky bark. Produces black berryfruits that contain small seeds.

Location: Commonly found on bauxite plateaus.

When to pick: Collect fruit when black and remove seed. Remove skin and pulp from seed and allow to dry in shaded area.

Seeding time: March - July



Address: Bauxite Hills Mine, Skardon River QLD

Website: www.metromining.com.au

Email: community@metromining.com.au

Species Identification Sheet:

Batwing Coral Tree

Erythrina Vespertilio

Description: Tree to 20m, deciduous, losing leaves during the dry season. Leaves have a diamond or "bat wing" appearance.

Location: Common throughout area.

When to pick: Collect seed pods once they have fallen from the tree. Seeds are red and easily noticeable under the parent tree. Place seeds directly into a calico bag. No cleaning required.

Seeding time: October - November



Address: Bauxite Hills Mine, Skardon River QLD

Website: www.metromining.com.au

Email: community@metromining.com.au

Species Identification Sheet:

Cooktown Ironwood

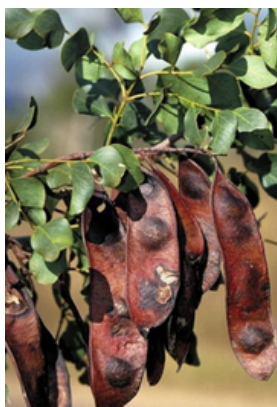
Erythrophleum Chlorostachys

Description: Tree to 15m, produces long seed pods.

Location: Commonly found on plains.

When to pick: Collect seed pod when brown. Pods can be found underneath trees or knocked from branches. Take seeds from pod and place into bags. Seeds must be hard and not contain any holes or fungus.

Seeding time: March - August



Address: Bauxite Hills Mine, Skardon River QLD

Website: www.metromining.com.au

Email: community@metromining.com.au

Species Identification Sheet:

White Beech

Gmelina Dalrympleana

Description: Up to 10m tall, produce small pink fruit containing a single seed.

Location: Swamps and seasonally inundated areas.

When to pick: When ripe, fruit will be pink-red containing a single seed. Remove the flesh and allow the seed to dry.

Seeding time: December – February



Address: Bauxite Hills Mine, Skardon River QLD

Website: www.metromining.com.au

Email: community@metromining.com.au

Species Identification Sheet:

Bushmans Peg

Grevillea Glauca

Description: Tree to 8m, produces large round seed pods that contain two paper thin seeds.

Location: Commonly found in wet areas of open forests.

When to pick: Remove the black/purple seed pods from trees when they are closed. Place the pods into an open container and leave in the sun. The pods will open allowing seeds to be removed. Seeds can also be collected from the ground immediately after there has been a fire

Seeding time: Mature pods can be collected all year round



Address: Bauxite Hills Mine, Skardon River QLD

Website: www.metromining.com.au

Email: community@metromining.com.au

Species Identification Sheet:

Dog's Balls

Grewia Retusifolia

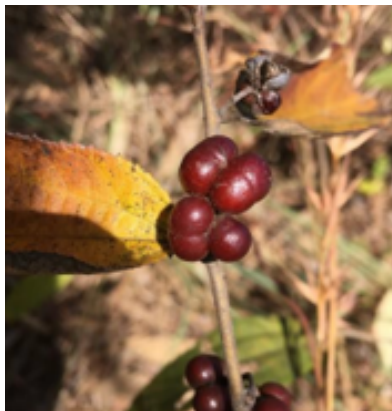
Description: Small shrub to 1m, produces clusters of small brown fruits along thin branches.

Location: Common in most areas.

When to pick: Pick fruits when they are brown and remove the flesh. To remove the flesh fruits can be soaked in water for an hour and then rubbed on a mesh surface.

Seeds are small and white.

Seeding time: June - September



Address: Bauxite Hills Mine, Skardon River QLD

Website: www.metromining.com.au

Email: community@metromining.com.au

Species Identification Sheet:

Swamp Mahogany

Lophostemon Suaveolens

Description: Tree to 12m, produces capsules that resemble gum nuts.

Location: Commonly found in seasonally inundated areas and swamps.

When to pick: Collect seed capsule when green. Place capsules into an open container and leave to dry for up to a week. Very small brown seeds will fall out of the capsules and settle on the bottom of the container. Remove empty capsules and place into bags.

Tip: Look for a patch of small trees in an open area. Have been known to be found in gravel pits located near swamps.

Seeding time: May - August



Address: Bauxite Hills Mine, Skardon River QLD

Website: www.metromining.com.au

Email: community@metromining.com.au

Species Identification Sheet:

Yellow Fruit

Maytenus Cunninghamii

Description: Tree to 4m, produces yellow capsules that contain a single blackseed.

Location: Found in most areas but are usually well separated from each other.

When to pick: Collect yellow capsules once they have split and are exposing the seed. Remove seed and place into collection bags.

Seeding time: May - July



Address: Bauxite Hills Mine, Skardon River QLD

Website: www.metromining.com.au

Email: community@metromining.com.au

Species Identification Sheet:

Weeping Paperbark

Melaleuca Leucadendra

Description: Tall tree to 30m, produces clusters of small capsules fruits along weeping branches.

Location: Common along waterways and swamps.

When to pick: Target branches that are close to the ground. Pick capsules when they are closed. Place them in the sun and they will open releasing small sawdust like seeds. Remove open capsules, twigs and leaves (using a strainer/colander) and place the fine seed into bags.

Seeding time: May - October



Address: Bauxite Hills Mine, Skardon River QLD

Website: www.metromining.com.au

Email: community@metromining.com.au

Species Identification Sheet:

Broad Leaf Paperbark

Melaleuca Viridiflora

Description: Tree to 10m, generally, a small tree with paperbark. Seed capsules are found on the end of the branches.

Location: Common throughout area

When to pick: Collect seed capsules when they are closed. Place in an open container in a dry area. The capsules will open exposing a powder like seed.

Seeding time: August - November



Address: Bauxite Hills Mine, Skardon River QLD

Website: www.metromining.com.au

Email: community@metromining.com.au

Species Identification Sheet:

Oyster Bush

Morinda Reticulata

Description: Shrub to 1m, distinct white leaves surrounding flowers.

Location: Common throughout area

When to pick: Pick fruit when they are brown and soft - not green. Extract seeds from the fruit, wash/clean and place out to dry

Seeding time: March - June



Note: The fruits in this picture are not mature and need to turn brown and soft



Address: Bauxite Hills Mine, Skardon River QLD

Website: www.metromining.com.au

Email: community@metromining.com.au

Species Identification Sheet:

Nonda Plum

Parinari Nonda

Description: Tree to 15m, produces large fleshy fruits that contain a single large seed.

Location: Commonly found in wet areas of open forests.

When to pick: Collect fruit once they have started to drop from the tree. Remove the flesh and ensure the seed is clean. Dry the seed in a shaded area. **Limit: 1 bag per collector unless otherwise approved**

Seeding time: August - November



Address: Bauxite Hills Mine, Skardon River QLD

Website: www.metromining.com.au

Email: community@metromining.com.au

Species Identification Sheet:

Geebung

Persoonia Falcata

Description: Tree to 10m, produces fleshy fruits attached to the outer branches

Location: Common throughout area

When to pick: Collect fruits once they have ripened and darkened in colour. Remove the flesh and allow to dry. Ensure no mould or fungus are present.

Seeding time: November - January



Address: Bauxite Hills Mine, Skardon River QLD

Website: www.metromining.com.au

Email: community@metromining.com.au

Species Identification Sheet:

Quinine

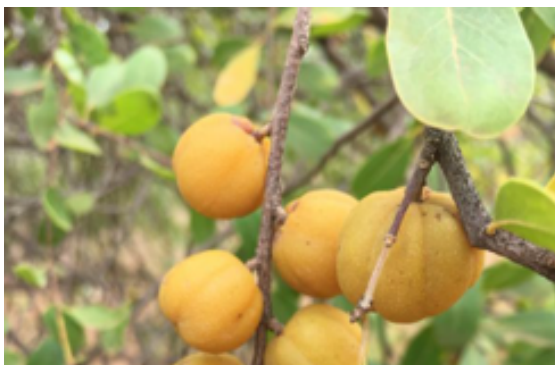
Petalostigma Banksii/Pubescens

Description: Tree to 6m, produces yellow fruits that crack open when dried.

Location: Commonly found in rocky areas such as ironstone plains.

When to pick: Collect fruit when yellow and place in a container. Place mesh or light material over the top. The fruits will explode when dried. Seeds are small and brown in colour. Ensure you store seeds above the ground as ants will eat them

Seeding time: June - August



Address: Bauxite Hills Mine, Skardon River QLD

Website: www.metromining.com.au

Email: community@metromining.com.au

Species Identification Sheet:

Hanging Fruit

Siphonodon Pendulus

Description: Tree to 10m, produces large fruits that contain several seeds.

Location: Common throughout area

When to pick: Collect fruits once they are soft and turned an off green/pale yellow colour. Split fruit and remove seeds. Place seeds in a shaded area to dry and ensure all pulp is removed.

Seeding time: July - October



Address: Bauxite Hills Mine, Skardon River QLD

Website: www.metromining.com.au

Email: community@metromining.com.au

Species Identification Sheet:

Woody Pear

Xylomelum Scottianum

Description: Tall tree to 10m, produces woody capsules that contain two papery seeds.

Location: Common throughout area

When to pick: Collect seed pods once they start to open or place tarp under tree once the capsules are open and shake. Place seeds into bags provided.

Seeding time: October - December



Address: Bauxite Hills Mine, Skardon River QLD

Website: www.metromining.com.au

Email: community@metromining.com.au

Collection Overstory species | Eucalyptus and Corymbia (Bloodwoods).

Types of fruit capsules:

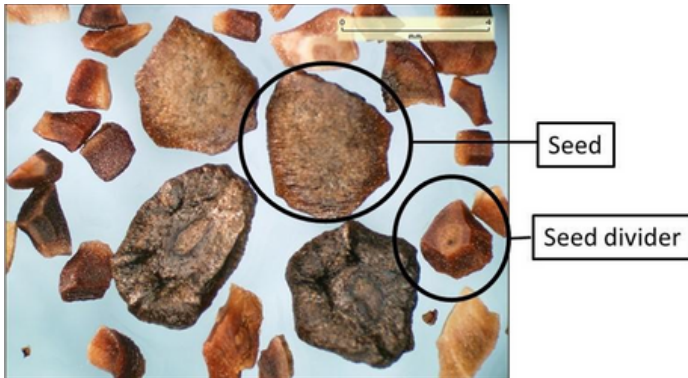
- Corymbia tend to have “urn” shaped capsules.
- Eucalyptus tend to have “disk” shaped capsules.



Corymbia capsule



Eucalyptus capsule



Seeds are similar for Corymbia and Eucalyptus. Both seeds and seed dividers will be accepted.

Always provide a sample of the seed capsules when handing in seed so identification can be confirmed.

Species Identification Sheet:

Clarkson's Bloodwood

Corymbia Clarksoniana

Description: Tree to 20m, grey- brown tessellated bark on all branches.

Location: Common throughout Cape York on a variety of soil types

When to pick: Sample seed pods to see if a cross has formed at the top of the capsule. Seed pods will also begin turning a pale green just before opening. Place branches containing pods on a tarp and shelter from the wind. Seed pods should open within a week and the seed will fall onto the tarp. Place the seed into a bag with a sample of the seed pods (for identification).

Seeding time: Mature pods can be collected from June - September.



Address: Bauxite Hills Mine, Skardon River QLD

Website: www.metromining.com.au

Email: community@metromining.com.au

Species Identification Sheet:

Cabbage Leaved Bloodwood

Corymbia Disjuncta

Description: Tree to 20m, rough tessellated bark at the base of the trunk, then smooth grey bark to outer most branches.

Location: Common on the edge of the bauxite plateau.

When to pick: Sample seed pods to see if a cross has formed at the top of the capsule. Seed pods will also begin turning a pale green just before opening. Place branches containing pods on a tarp and shelter from the wind. Seed pods should open within a week and the seed will fall onto the tarp. Place the seed into a bag with a sample of the seed pods (for identification).

Seeding time: Mature pods can be collected from November - January.



Address: Bauxite Hills Mine, Skardon River QLD

Website: www.metromining.com.au

Email: community@metromining.com.au

Species Identification Sheet:

Cape Melville Bloodwood

Corymbia Nesophila

Description: Very tall tree to 30m, grey to grey-brown tessellated bark, crumbling when rubbed.

Location: Common on the edge of the bauxite plateau.

When to pick: Sample seed pods to see if a cross has formed at the top of the capsule. Seed pods will also begin turning a pale green just before opening. Place branches containing pods on a tarp and shelter from the wind. Seed pods should open within a week and the seed will fall onto the tarp. Place the seed into a bag with a sample of the seed pods (for identification).

Seeding time: Mature pods can be collected from July - October



Address: Bauxite Hills Mine, Skardon River QLD

Website: www.metromining.com.au

Email: community@metromining.com.au

Species Identification Sheet:

West Cape Bloodwood

Corymbia Novoguineensis

Description: Tree to 25m, grey - brown tessellated bark on all branches. Often confused with the Clarksoniana but has much larger seed capsules.

Location: Often found bordering swamps and other poorly drained areas.

When to pick: Sample seed pods to see if a cross has formed at the top of the capsule. Seed pods will also begin turning a pale green just before opening. Place branches containing pods on a tarp and shelter from the wind. Seed pods should open within a week and the seed will fall onto the tarp. Place the seed into a bag with a sample of the seed pods (for identification).

Seeding time: Mature pods can be collected from August - November



Address: Bauxite Hills Mine, Skardon River QLD

Website: www.metromining.com.au

Email: community@metromining.com.au

Species Identification Sheet:

Blotchy Bloodwood

Corymbia Stockeri

Description: Tree to 15m, rough tessellated bark at the base of the trunk, then flaky bark that could be pink, yellow or grey along the trunk and branches, to smooth white bark on outer most branches.

Location: Common on the bauxite plateau.

When to pick: Sample seed pods to see if a cross has formed at the top of the capsule. Seed pods will also begin turning a pale green just before opening. Place branches containing pods on a tarp and shelter from the wind. Seed pods should open within a week and the seed will fall onto the tarp. Place the seed into a bag with a sample of the seed pods (for identification).

Seeding time: Mature pods can be collected from July - October



Address: Bauxite Hills Mine, Skardon River QLD

Website: www.metromining.com.au

Email: community@metromining.com.au

Species Identification Sheet:

Cape York Red Gum

Eucalyptus Brassiana

Description: Tree to 20m, rough grey bark on the lower trunk with white smooth bark on the remainder of trunk and branches. Leaves have a strong eucalyptus smell.

Location: Common on the edges of the bauxite plateau. Often found on damp soils and along waterways and swamps.

When to pick: Sample seed pods to see if a cross has formed at the top of the capsule. Seed pods will also begin turning a pale green just before opening. Place branches containing pods on a tarp and shelter from the wind. Seed pods should open within a week and the seed will fall onto the tarp. Place the seed into a bag with a sample of the seed pods (for identification).

Seeding time: Mature pods can be collected from October - January



Address: Bauxite Hills Mine, Skardon River QLD

Website: www.metromining.com.au

Email: community@metromining.com.au

Species Identification Sheet:

Cullens Ironbark

Eucalyptus Cullenii

Description: Tree to 15m, tree has hard, black bark to the outermost branches. Produces small seed capsules.

Location: Common on the edges of the bauxite plateau. Often found on soils derived from ironstone.

When to pick: Sample seed pods to see if a cross has formed at the top of the capsule. Seed pods will also begin turning a pale green just before opening. Place branches containing pods on a tarp and shelter from the wind. Seed pods should open within a week and the seed will fall onto the tarp. Place the seed into a bag with a sample of the seed pods (for identification).

Seeding time: Mature pods can be collected from June - November



Address: Bauxite Hills Mine, Skardon River QLD

Website: www.metromining.com.au

Email: community@metromining.com.au

Species Identification Sheet:

Molloy Box

Eucalyptus Leptophleba

Description: Tree to 20m, tree has grey bark to the outermost branches.

Location: Common throughout Cape York on a variety of soil types.

When to pick: Sample seed pods to see if a cross has formed at the top of the capsule. Seed pods will also begin turning a pale green just before opening. Place branches containing pods on a tarp and shelter from the wind. Seed pods should open within a week and the seed will fall onto the tarp. Place the seed into a bag with a sample of the seed pods (for identification).

Seeding time: Mature pods can be collected from June - November



Address: Bauxite Hills Mine, Skardon River QLD

Website: www.metromining.com.au

Email: community@metromining.com.au

Species Identification Sheet:

Cape York Stringybark

Eucalyptus Megasepala

Description: Tree to 20m, tree has "stringy bark" to the outermost branches. Produces seed capsules that have an elongated keel on the four edges of the capsule. (Often confused with *E. Tetradonta* but not common on the bauxite plateau and is generally shorter).

Location: Generally found on shallow soils such as ironstone and sandstone. Rarely seen on bauxite.

When to pick: Sample seed pods to see if a cross has formed at the top of the capsule. Seed pods will also begin turning a pale green just before opening. Place branches containing pods on a tarp and shelter from the wind. Seed pods should open within a week and the seed will fall onto the tarp. Place the seed into a bag with a sample of the seed pods (for identification).

Seeding time: Mature pods can be collected from July - September



Address: Bauxite Hills Mine, Skardon River QLD

Website: www.metromining.com.au

Email: community@metromining.com.au

Species Identification Sheet:

Darwin Stringybark

Eucalyptus Tetrodonta

Description: Tree to 25m, tree has "stringybark" to the outermost branches. Produces seed capsules that appear square in shape.

Location: Very common on the bauxite plateau.

When to pick: Sample seed pods to see if a cross has formed at the top of the capsule. Seed pods will also begin turning a pale green just before opening. Place branches containing pods on a tarp and shelter from the wind. Seed pods should open within a week and the seed will fall onto the tarp. Place the seed into a bag with a sample of the seed pods (for identification).

Seeding time: Mature pods can be collected from October - December



Address: Bauxite Hills Mine, Skardon River QLD

Website: www.metromining.com.au

Email: community@metromining.com.au



Notes:

Address: Bauxite Hills Mine, Skardon River QLD

Website: www.metromining.com.au

Email: community@metromining.com.au



Notes:

Address: Bauxite Hills Mine, Skardon River QLD

Website: www.metromining.com.au

Email: community@metromining.com.au



METRO MINING

Cairns: Gimuy Walubara Yidinji and Yirrganydji Country – Art Work Spaces, 36 Abbott St, Cairns Qld 4870
Bauxite Hills: Ankamuthi Country - Bauxite Hills Mine, Mapoon Skardon River Qld 4874
Brisbane: Turrbal and Yuggera Country - Lvl 4, 135 Wickham Tce, Brisbane Qld 4000
Website: www.metromining.com.au
Email: community@metromining.com.au **ABN:** 25 101 655 298 **Ph:** 07 3009 8000